

White Oak Creek

Recreational Use Attainability Analysis Summary of Findings

Texas Institute for Applied Environmental Research
Stephenville, Texas

November 13, 2017 – Mount Pleasant, Texas
November 14, 2017– Sulphur Springs, Texas



Project Partners

- Texas State Soil and Water Conservation Board (TSSWCB)
- Texas Institute for Applied Environmental Research (TIAER)



TSSWCB

- Provide state oversight
- Management and coordination of project activities
 - Project partners
 - Texas Commission on Environmental Quality (TCEQ)
- Provide project funding



TIAER

- Project administration
- Develop & maintain stakeholder relations
- Perform RUAA survey activities
- GIS inventory
- Facilitate meetings
- Develop final technical reports



Bacteria Impairment

White Oak Creek is not meeting the water quality standard for primary contact recreation

- Due to elevated levels of *E.coli*
- Requires action to meet the standards that are set by the State of Texas and EPA



What is the Texas 303 (d) List?

- Texas 303 (d) List of Impaired Water bodies
 - Requirement of the Clean Water Act
 - Developed by TCEQ to summarize the condition of the state's surface waters, including concerns for public health, fitness for use by aquatic species and other wildlife, and specific pollutants.



Impaired Stream Segments

- White Oak Creek (0303B)
 - 2006 Texas Water Quality 303(d) List
 - Bacteria
 - Current Geometric mean = 186 cfu/ 100mL



RUAA

- One method of removing the White Oak Creek from the impaired list for bacteria
 - Assess if the recreational standard is appropriate
 - Recreational use attainability analysis (RUAA)



Purpose of RUAA

- To determine if primary contact recreation is the correct use or if another recreational use category may be more appropriate.

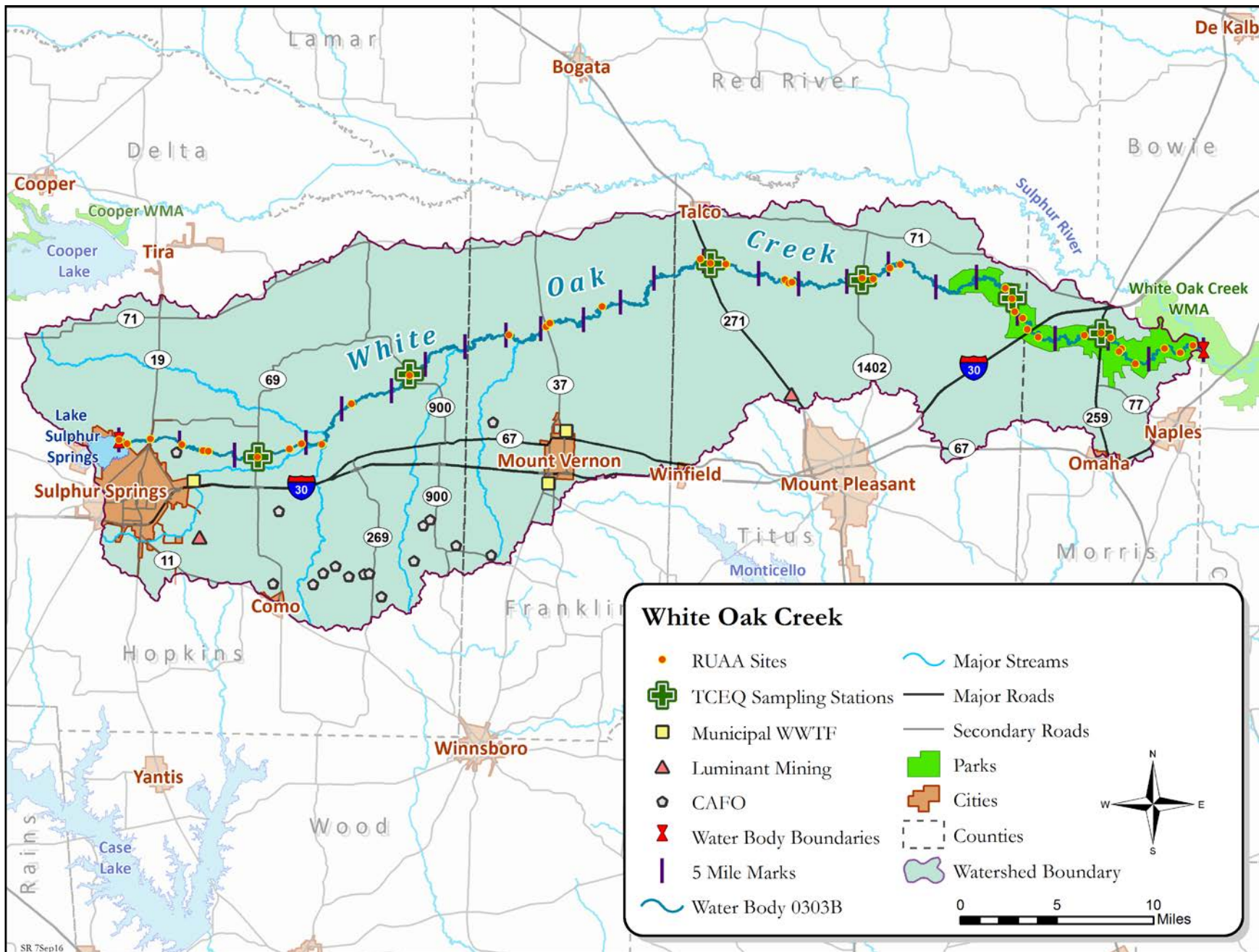
RUAA Components

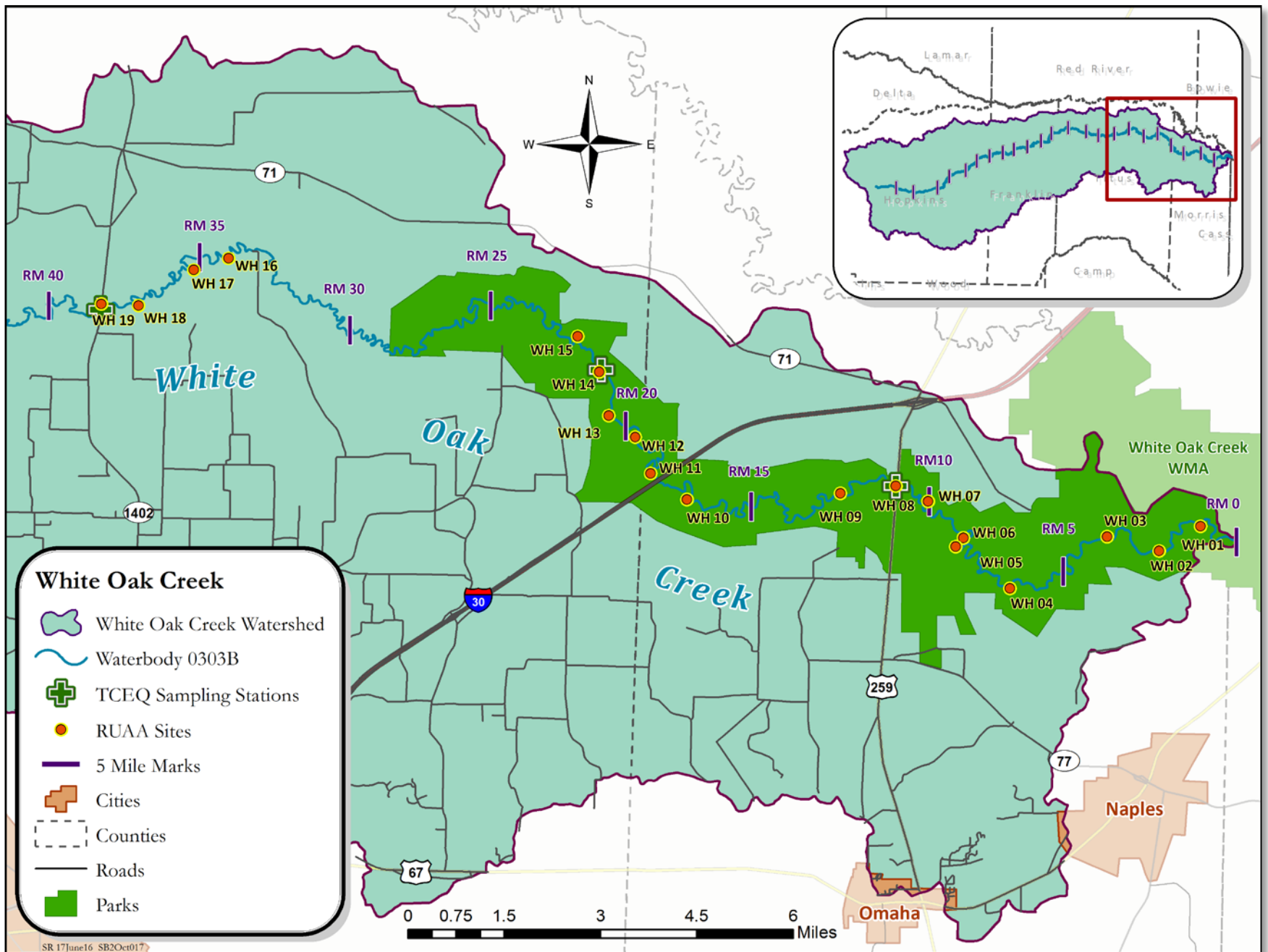
- **Historical Information Review** – to document past recreational uses
- **Interviews** – to obtain feedback on current and past recreational uses from stakeholders
- **RUAA Surveys** – to document current waterbody conditions and uses

Why we chose this approach

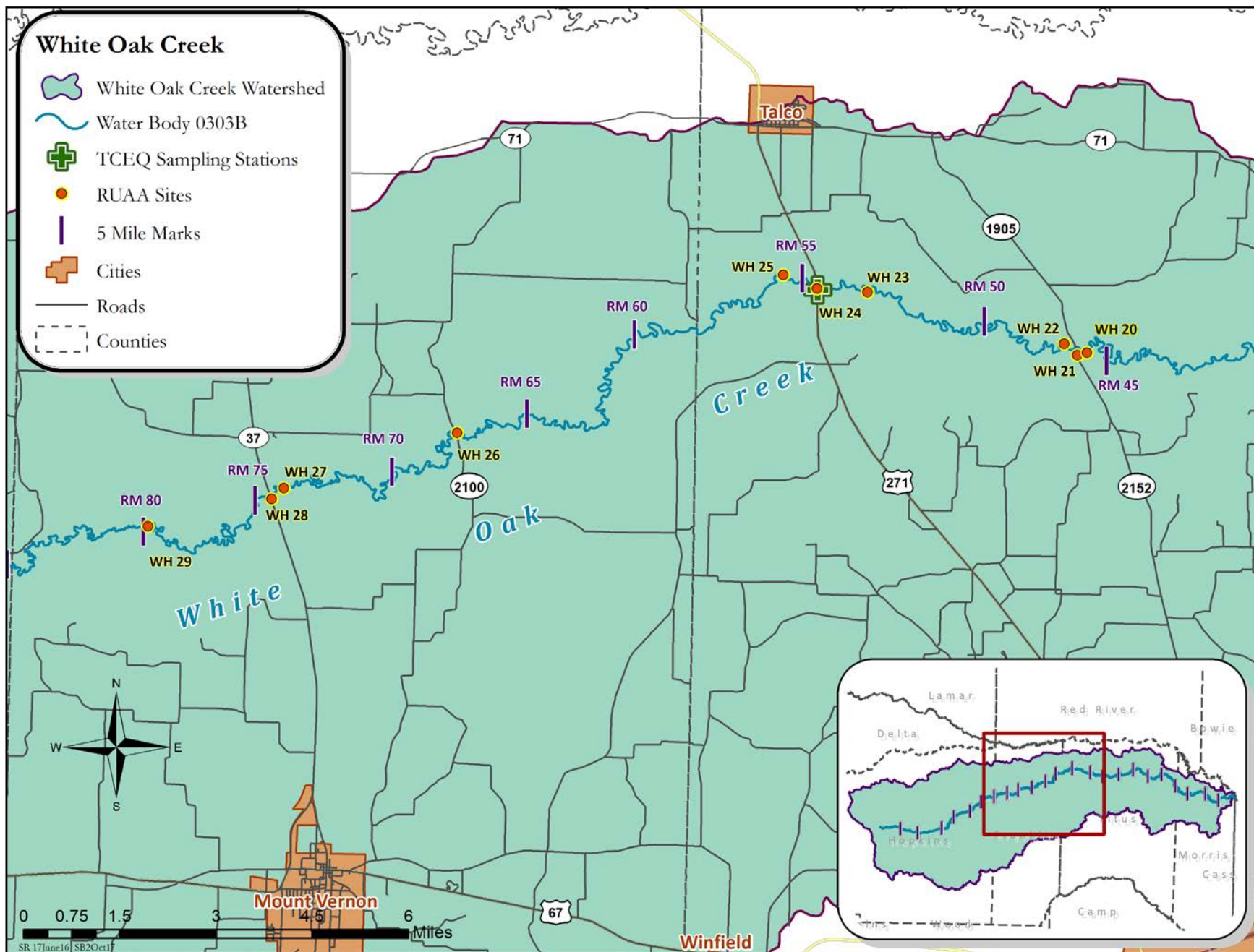
- Once on the 303(d) List, action is required by the state
 - Viable Candidate
 - The Most Cost Effective
 - Non Regulatory Approach
 - State Led, Not Federal

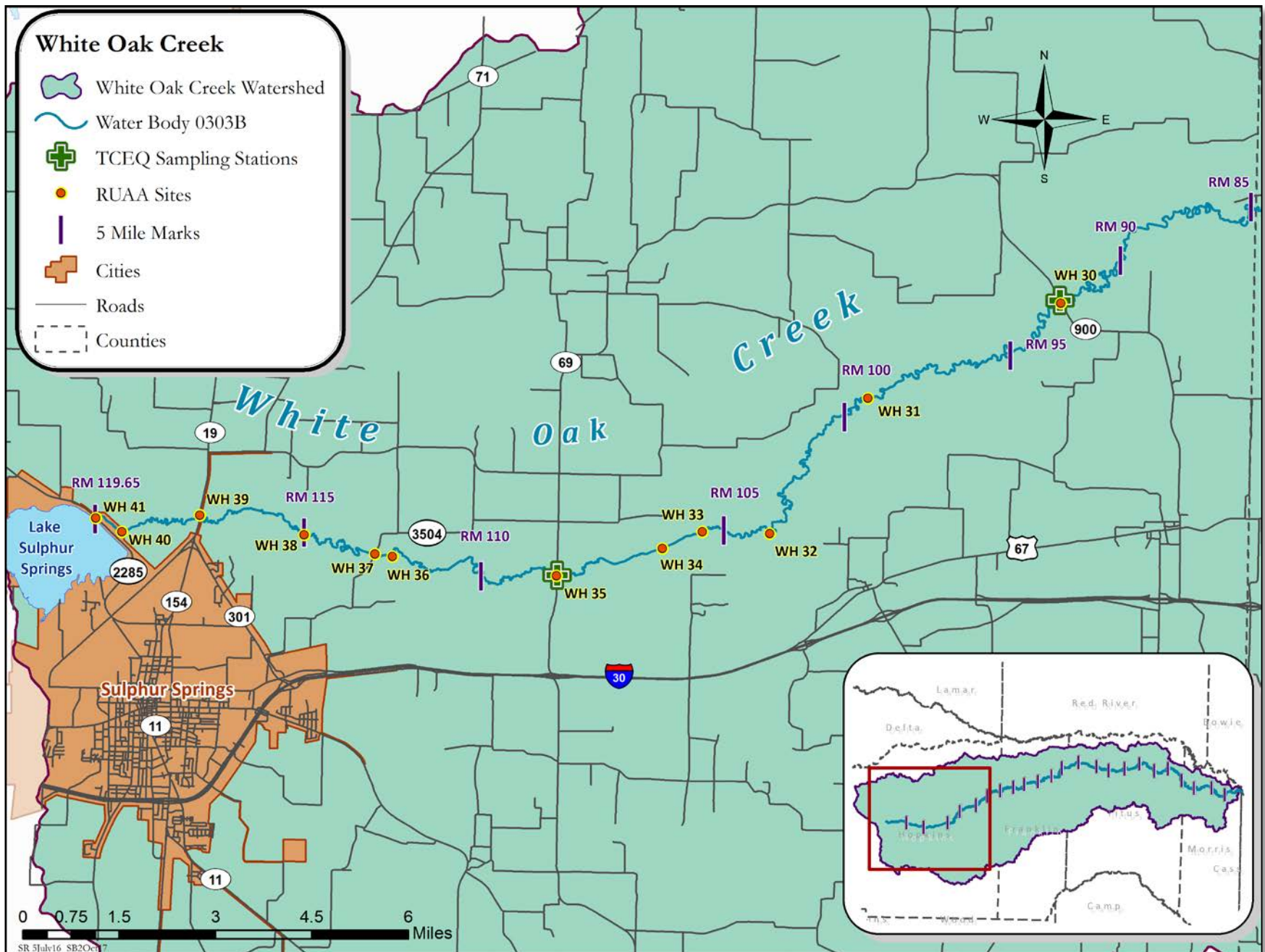






SR 17June16 SB2Oct017





Survey Dates for White Oak Creek

- First RUAA Survey

- Conducted: **June 22 – 24, 2016 and July 18 – 22, 2016**

- Summary

- Sufficient water for swimming, boating, and fishing in the downstream portion of White Oak Creek
 - Thick vegetation & steep banks making it difficult to access water
 - No direct primary contact recreation observed

- Second RUAA Survey

- Conducted: **August 7 – 11, 2016 and August 25, 2016**

- Summary

- Sufficient water for swimming, boating, and fishing in the downstream portion of White Oak Creek
 - Thick vegetation & steep banks making it difficult to access water
 - No direct primary contact recreation observed



White Oak Creek Photographs



WH01 150m Downstream



**WH01 150m Downstream –
second survey**

White Oak Creek Photographs



WH11 300m Upstream



**WH15 150m Right Bank –
Second Survey**

White Oak Creek Photographs



WH18 0m Downstream



**WH08 0m Downstream –
Second Survey**

White Oak Creek Photographs



WH33 Logjam



**WH36 300m Downstream –
Second Survey**

White Oak Creek Photographs



WH38 150m Downstream



WH39 0m Upstream – Second Survey

Next Steps

- Public Comment Period
 - Open from Now – December 11, 2017
 - Please take this opportunity to review the White Oak Creek Draft Report
 - Provide comments

Report can be viewed:

<http://tiaer.tarleton.edu/ruaa/white-oak-creek.html>





Contact Information

Leah Taylor

Email: ltaylor@tiaer.tarleton.edu

Office Phone: 254.968.0513



Questions?

Project Website:

<http://tiaer.tarleton.edu/ruaa/white-oak-creek.html>

*Funding Provided through a State Nonpoint Source grant from
Texas State Soil and Water Conservation Board.*

Leah Taylor

Senior Project Director

Texas Institute for Applied Environmental Research

ltaylor@tiaer.tarleton.edu

(254) 968-0513

